

GBGT1 Antibody (Center)
Purified Rabbit Polyclonal Antibody (Pab)
Catalog # AP22026c**Specification**

GBGT1 Antibody (Center) - Product Information

Application	WB,E
Primary Accession	Q8N5D6
Reactivity	Human
Host	Rabbit
Clonality	polyclonal
Isotype	Rabbit IgG
Calculated MW	40127
Antigen Region	154-185

GBGT1 Antibody (Center) - Additional Information**Gene ID** 26301**Other Names**

Globoside alpha-1, 3-N-acetylgalactosaminyltransferase 1, 2.4.1.-, Forssman glycolipid synthase-like protein, GBGT1

Target/Specificity

This GBGT1 antibody is generated from a rabbit immunized with a KLH conjugated synthetic peptide between 154-185 amino acids from the Central region of human GBGT1.

Dilution

WB~~1:2000

E~~Use at an assay dependent concentration.

Format

Purified polyclonal antibody supplied in PBS with 0.09% (W/V) sodium azide. This antibody is purified through a protein A column, followed by peptide affinity purification.

Storage

Maintain refrigerated at 2-8°C for up to 2 weeks. For long term storage store at -20°C in small aliquots to prevent freeze-thaw cycles.

Precautions

GBGT1 Antibody (Center) is for research use only and not for use in diagnostic or therapeutic procedures.

GBGT1 Antibody (Center) - Protein Information**Name** GBGT1 ([HGNC:20460](#))**Function** Has lost the ability to synthesize Forssman glycolipid antigen (FORS1/FG)

(PubMed:[10506200](#)). Might have acquired an alternative function in glycosphingolipid metabolism, but it remains to be established. It appears to have drifted more slowly than confirmed pseudogenes in the glycosyltransferase 6 family, suggesting that it has remained under evolutionary pressure.

Cellular Location

Golgi apparatus membrane; Single- pass type II membrane protein

Tissue Location

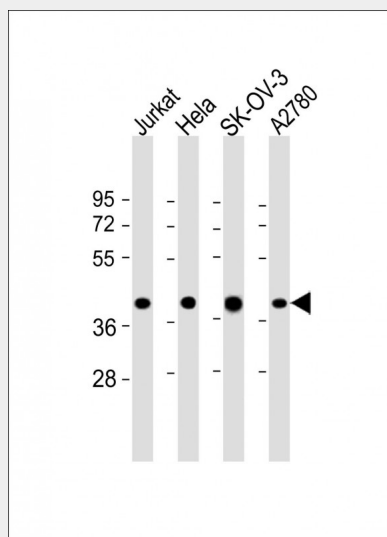
Widely expressed. Expressed at higher level in placenta, ovary and peripheral blood leukocyte, whereas it is weakly expressed in liver, thymus, and testis (PubMed:10506200). Expressed in bone marrow erythroid cells (PubMed:23255552)

GBGT1 Antibody (Center) - Protocols

Provided below are standard protocols that you may find useful for product applications.

- [Western Blot](#)
- [Blocking Peptides](#)
- [Dot Blot](#)
- [Immunohistochemistry](#)
- [Immunofluorescence](#)
- [Immunoprecipitation](#)
- [Flow Cytometry](#)
- [Cell Culture](#)

GBGT1 Antibody (Center) - Images



All lanes : Anti-GBGT1 Antibody (Center) at 1:2000 dilution Lane 1: Jurkat whole cell lysate Lane 2: HeLa whole cell lysate Lane 3: SK-OV-3 whole cell lysate Lane 4: A2780 whole cell lysate Lysates/proteins at 20 µg per lane. Secondary Goat Anti-Rabbit IgG, (H+L), Peroxidase conjugated at 1/10000 dilution. Predicted band size : 40 kDa Blocking/Dilution buffer: 5% NFDM/TBST.

GBGT1 Antibody (Center) - Background

Catalyzes the formation of some glycolipid via the addition of N-acetylgalactosamine (GalNAc) in alpha-1,3-linkage to some substrate. Glycolipids probably serve for adherence of some pathogens.

GBGT1 Antibody (Center) - References

Xu H.,et al.J. Biol. Chem. 274:29390-29398(1999).
Clark H.F.,et al.Genome Res. 13:2265-2270(2003).
Ota T.,et al.Nat. Genet. 36:40-45(2004).
Humphray S.J.,et al.Nature 429:369-374(2004).
Mural R.J.,et al.Submitted (JUL-2005) to the EMBL/GenBank/DDBJ databases.